



# mitech news

In this edition:

- Wood preservatives
- Conveyor overload detector
- 2020 News item summary

## Greetings to all

Welcome to the August news edition. This month we present one service for engineered wood panels and for veneer-plywood



## Trasmec Reaction Devices (Conveyor Overload detectors)

All engineered wood panel producers are familiar with time and cost wasting events of chain conveyor component failures. Usually requiring the manual conveyor emptying and the broken shear-pin removal and replacement, (ask any maintenance person about the “delight” of this task!)

Trasmec Reaction Devices

(Or torque overload devices) allow the management of geared motor conveyors.

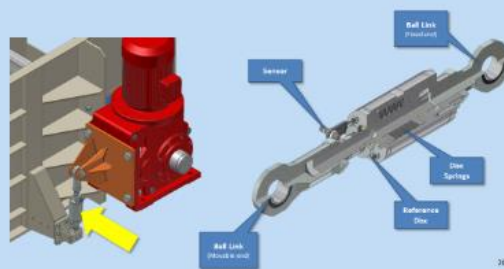
Loads and overload frequencies can result in a choice of manual or automatic reactions. This includes automatic shutdown



### Reaction Device

#### 2. Installation

Replaces the link between the hollow shaft geared motor and the machine.



For example:

### 1. Features

Allows the customer to manage geared motors overloads by sending the overload signal to the plant's PLC.

The customer may therefore decide each time how to manage the information from the reaction device or may instruct the PLC about the action to be taken:

Type of overload	Action
Occasional	Overload record – No action
Cyclic	An inspection of the machine may be programmed
Prolonged	Machine stop (PLC controlled)



## Reaction Device



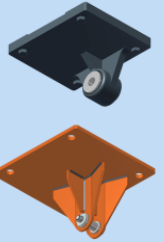
### 4. Options

The Reaction Device may be installed with all the geared motors SEW KA and KH, starting from the size 87 up to the size 157.

It may be also used with geared motors of other manufacturers (the device must be accommodated for the application).

The device may be installed on:

- Geared motors KA..T and KH..T equipped with standard SEW torque arm (option ..T when ordering the geared motor) for standard applications (no frequent overload);
- Geared motors KA and KH with Heavy Duty torque arm (manufactured by Trasmec and supplied as a separate part), for critical applications with frequent overloads.



**Trasmec Reaction Devices save money**



**Greenland® EcoTechnology Inc**

## Mould resistance

Jet-Mate is well know for their colouring materials for all industries:

Dyes, pigments and inks for industries ranging from paper to plastics and from pprinters to textiles. For most of our industries we focus on engineered wood panels and laminated surface panels

Now we introduce **Greenland® EcoTechnology Inc**



Collabotating with Jet-Mate Technology Greenland® offers products with effective resistance to mold, termites and fungal decay.

## GREENLAND AM-1 Anti-Mold

GREENLAND AM-1 is a water-based combination of proprietary multi-component actives with no harmful solvents to be released during applications. That provides a broad-spectrum microbe

protection. Contains highly effective anti-mold chemicals and preservatives to ensure super protection against mold growth, and also provide supplemental protection from wood-destroying fungal and insect attacks.

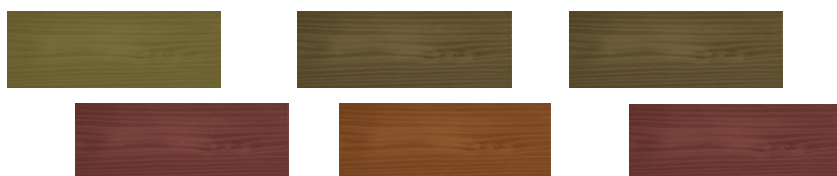
Can be applied using conventional surface treatment technologies as well as sophisticated in line processes.

Timber, and bamboo based materials, plywood, OSB, LVL, wood or wood composite laminated beams, trusses, structural panels, and other wood based engineered products against mold attack

### **GREENLAND CW wood colors**

GREENLAND CW is specially developed by Greenland EcoTechnology Inc for wood coloring solution.

- Waterborne with great staining fastness and affinity to wood fiber.
- Specialises in custom developing liquid colors which can be applied simultaneously with pressure treatment and which enhances the appearance and appeal of the treated timber.
- The wood colors effectively mask Bluestain, thereby enhancing the saleability of the treated timber.
- GREENLAND offers full range of colors as well as custom developing for customer.



### summary of 2020 topics

- ❖ March
  - Peel coating
  - pMDI
- ❖ April
  - Paper cutting and winding
- ❖ May
  - Biocides for laminates
- ❖ June
  - Panel colouring P
  - Product value
  - New website
- ❖ July
  - Trasmec conveyor chains
  - Panda Pellets

Feel free to request copies of articles.



## Mitech Website

We have upgraded our web-site.  
Please visit [www.mitechps.com](http://www.mitechps.com) for a full overview of our services.  
All your comments are invited

### Engineered wood panels

- Conveyors
- Chippers
- Resin plants
- Chip washers
- Plywood presses
- Mat Spray Systems
- Biomass Pellet Systems

### Panel Lamination

- Paper impregnation lines
- Short Cycle Presses
- HPL Presses
- Veneer presses
- Press Pads
- Press Caul Plates
- Paper winders
- Paper Cutters
- Protective Foil application

### Additives

- Release Agents
- Wetting Agents
- Hardeners
- Dyes and Pigments
- Flame Retardants

### CONTACT: Mike Green

Mitech Panel Services Pty Ltd  
7, Maguire Place  
Dardanup West  
WA, 6236  
Australia

Ph: 61 897281828  
Fax: 61 894636058  
Mob: 61 435651615  
mike@mitechps.com  
lois@mitechps.com  
www.mitechps.com

